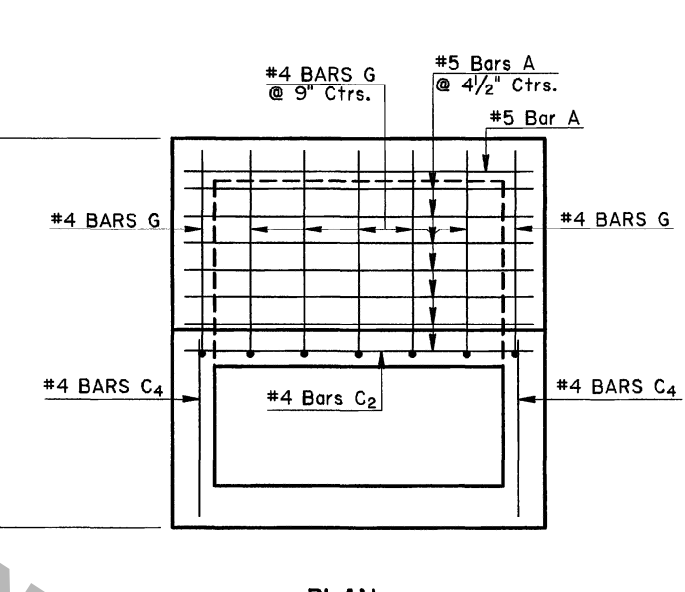
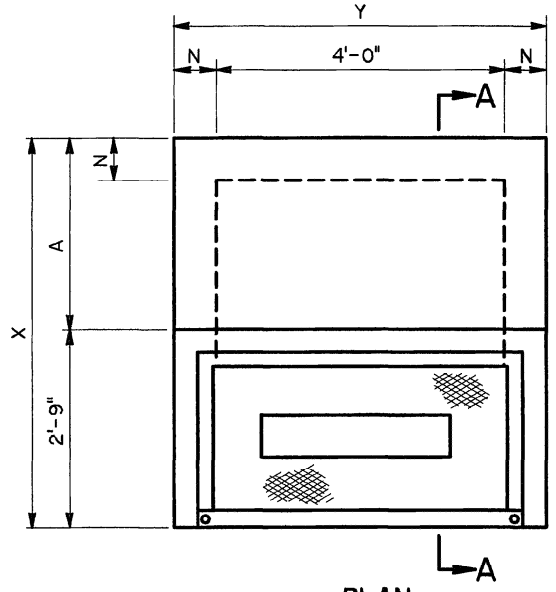


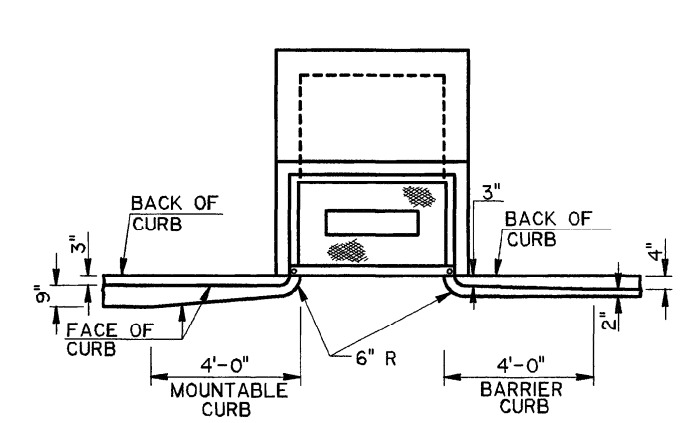
SECTION
SHOWING BOTTOM SLAB REINFORCING STEEL



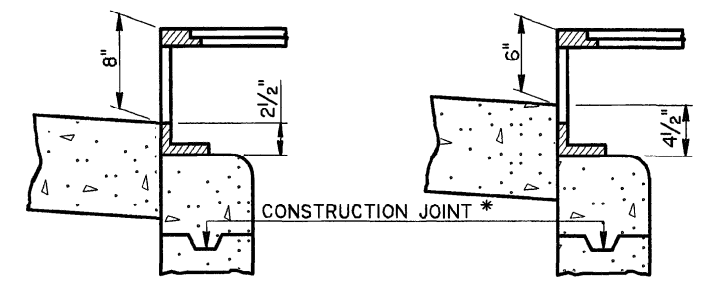
PLAN
SHOWING TOP SLAB REINFORCING STEEL



PLAN
FOR DETAILS OF METAL GRATE AND COVER, SEE STD. PLAN MC-01, TYPE "H".



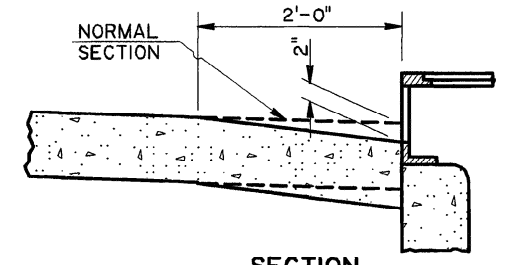
TRANSITION IN CURB WIDTH
(TYPICAL)



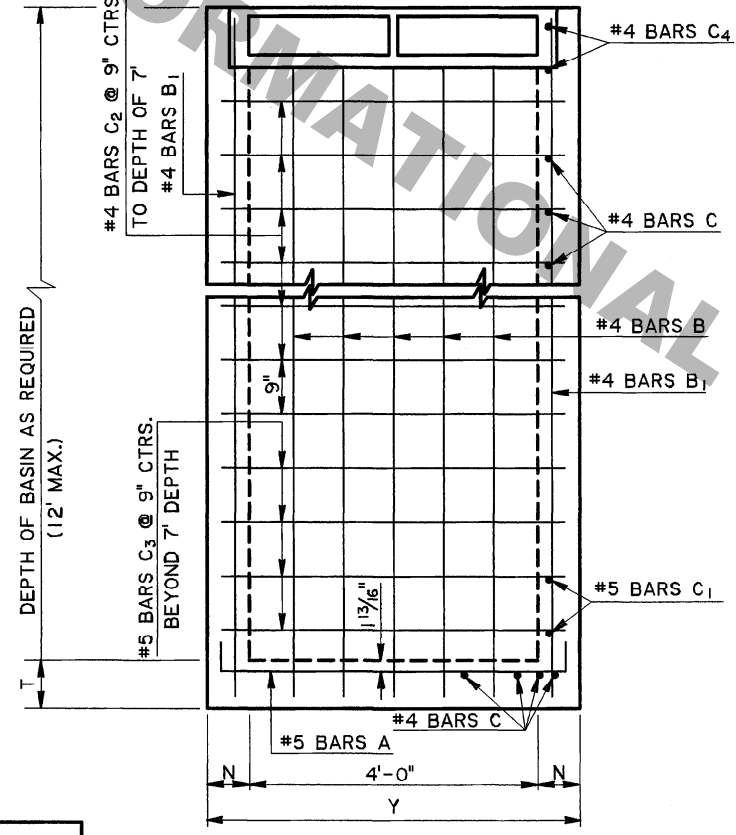
INLET CONFIGURATION

WHEN USED WITH 6" BARRIER CURB
WHEN USED WITH 4" MOUNTABLE CURB

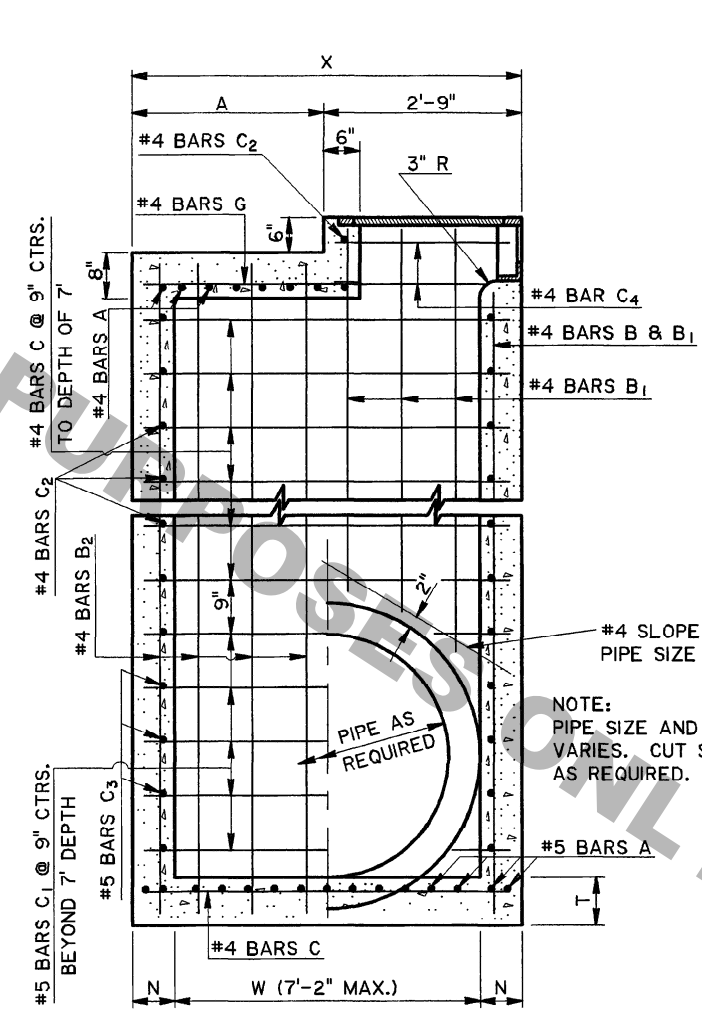
* NOTE:
THE BASIN SHALL NOT BE CONSTRUCTED ABOVE BOTTOM OF PAVEMENT ELEVATION UNTIL THE PAVING ADJACENT TO THE BASIN IS IN PLACE.



SECTION
SHOWING PAVEMENT SUMP TYPICAL

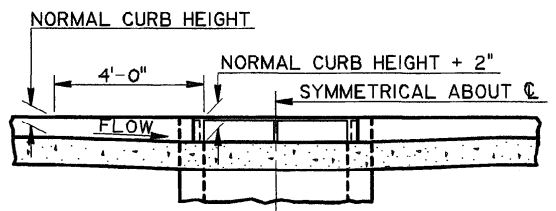


ELEVATION

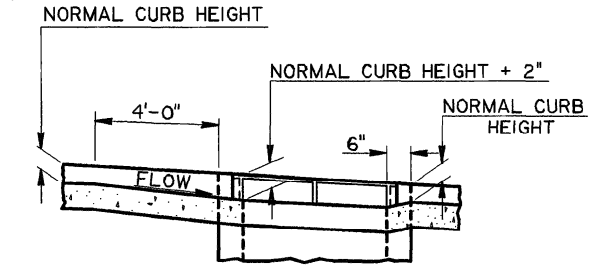


SECTION A-A

* NOTE:
PIPE SIZE AND LOCATION VARIES. CUT STEEL TO CLEAR AS REQUIRED.



TRANSITION IN CURB HEIGHT CATCH BASIN AT LOW POINT



TRANSITION IN CURB HEIGHT CATCH BASIN ON A GRADE

CONCRETE CATCH BASIN										
PIPE DIA. ①	W ②	T	DEPTH LESS THAN 8'				DEPTH FROM 8' TO 12'			
			X	Y	N	A	X	Y	N	A
In	Ft-In	In	Ft-In	Ft-In	In	Ft-In	Ft-In	Ft-In	In	Ft-In
15 to 24	2-6	8	3-8	5-2	7	0-11	3-10	5-4	8	1-1
30	3-1	8	4-3	5-2	7	1-6	4-5	5-4	8	1-8
36	3-8	8	4-10	5-2	7	2-1	5-0	5-4	8	2-3
42	4-3	8	5-5	5-2	7	2-8	5-7	5-4	8	2-10
48	4-10	8	6-0	5-2	7	3-3	6-2	5-4	8	3-5
54	5-5	9	6-7	5-2	7	3-10	6-9	5-4	8	4-0
60	6-0	9	7-2	5-2	7	4-5	7-4	5-4	8	4-7
72	7-2	9	8-4	5-2	7	5-7	8-6	5-4	8	5-9

① REFERS TO SIDEWALL PIPE OR "TRUNKLINE". FRONTWALL OR "CROSSING PIPE" MAY NOT EXCEED 42".
② W AND X DIMENSIONS MAY BE VARIED FOR SKEWED PIPE, BUT W SHALL NOT EXCEED 7'-2".

SHEET NUMBER

DESIGNED CDJ
CHECKED HUB
DATE 11-2-00

DETAILED KAJ
CHECKED NMR
DATE 1-31-97

JCM
BY DATE 11-2-00

Converted Metric CB-06M to English CB-06
REVISION DESCRIPTION

APPROVED BY P. P. Dillman
DATE 11-2-00
CHIEF ENGINEER

CONCRETE CATCH BASIN
CURB OPENING
4" MOUNTABLE OR 6" BARRIER CURB
MAX. PIPES: 42" X 72", MAX. DEPTH: 12"

HYDRAULICS SECTION